

# **Service specification for the provision of End of Life Care Medication in Tower Hamlets by Community Pharmacy**

**April 2022**

## Contents

Introduction.....	3
Background.....	3
1. Document Purpose.....	3
2. Service Outline.....	3
3. Aims and Intended Outcomes.....	4
4. Service Specification and Service Standards.....	4
5. Service description for out of hours access.....	6
6. Training Requirements.....	7
7. Quality and Clinical Governance Standards.....	7
8. Monitoring Requirements.....	8
9. Professional Indemnity Insurance.....	8
10. End of Life Care Access to Medication Scheme Payment Schedule.....	8

11. Declaration .....	9
Appendix 1: Palliative Care and End of Life Care Medication Stock List.....	10
Appendix 2: Community Pharmacy Palliative Care and End of Life Care Injectable Prescription Algorithm.....	12
Appendix 3: Location of pharmacies providing EoL medications.....	13
Appendix 4: Good Practice Guidance- CD disposal/destruction for community teams	12
Appendix 5: Record of expired drugs for the end of life community pharmacy service .....	15

**SERVICE SPECIFICATION FOR THE AVAILABILITY OF END OF LIFE MEDICATION IN TOWER HAMLETS**  
**THIS SPECIFICATION DESCRIBES THE SERVICE TO BE PROVIDED BY:**

«Pharmacy\_Name» «Address\_1» «Address\_2» «Address\_3» «City» «Postal\_Code»  
**For the provision of Palliative Care Drugs as a Local Enhanced Service**

**Introduction**

The aim of this service is to ensure the availability of end of life care medication across the borough of Tower Hamlets.

The service is designed to improve access to these medicines for patients, carers and healthcare professionals when they are required, in order to ensure that there is no delay to treatment whilst also providing access and choice.

## Background

End of life care requires specialist medicines that are not routinely available in all community pharmacies and this may cause delay in treatment for patients.

### 1. Document Purpose

1.1. This document sets out the service specification to cover the provision of end of life care (EoLC) medicines within community pharmacies.

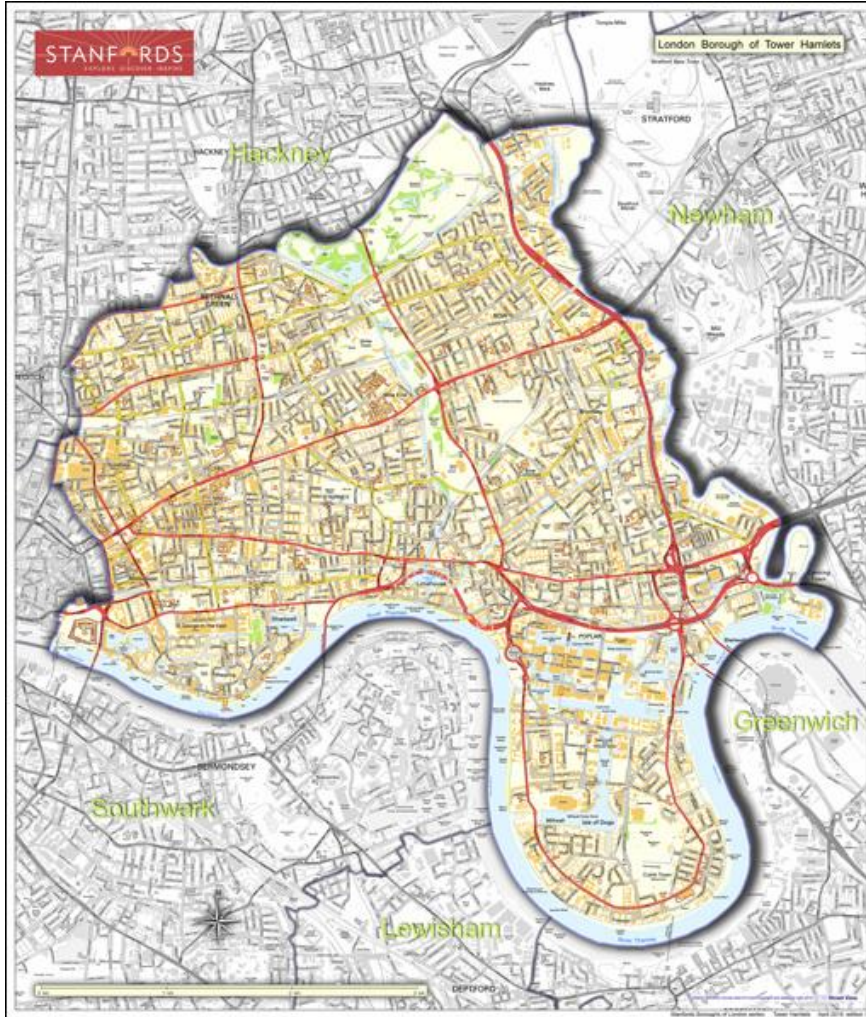
### 2. Service Outline

2.1. This service will require the pharmacy to maintain the required stock of EoLC drugs in line with the agreed list in Appendix 1: **Palliative Care and End of Life Care Medication Stock List**

Medication	Form	Strength	Pack Size	total stock Minimum Quantity Kept	Drug Tariff price March 2022
<b>Alfentanil</b>	Ampoules for Injection	500micrograms/ml	10 x 2ml	<b>3</b>	£6.34
<b>Alfentanil</b>	Ampoules for Injection	5mg/ml	10 x 1ml	<b>3</b>	£23.19
<b>Buprenorphine patches</b>	Transdermal patches	5 micrograms/hour	4 patches	<b>2</b>	£17.60
		10 micrograms/hour	4 patches	<b>2</b>	£31.55
<b>Codeine</b>	Liquid sugar-free	15mg/5ml	200ml	<b>1</b>	£1.76
<b>Cyclizine</b>	Injection	50mg/ml	5 x 1ml	<b>2</b>	£5.78
<b>Dexamethasone Injection</b>	Injection	3.3mg/ml	10 x 1ml	<b>1</b>	<b>£23.99</b>
<b>Diamorphine (OUT OF STOCK)</b>	Powder for Injection	10mg	5 Amps	<b>1</b>	
<b>Diamorphine</b>	Powder for Injection	30mg	5 amps	<b>1</b>	£16.53
<b>Fentanyl patches</b>	Transdermal patches	12micrograms/hour	5 patches	<b>5</b>	£12.59
		25micrograms/hour	5 patches	<b>2</b>	£17.99
		50micrograms/hour	5 patches	<b>5</b>	£33.66
<b>Glycopyrronium</b>	Injection	200micrograms/ml	10 x 1ml	<b>1</b>	£9.68

<b>Glycopyrronium</b>	injection	<b>600micrograms/3ml</b>	10 x 3ml	<b>2</b>	£14.99
<b>Haloperidol</b>	Injection	5mg/ml	10 x 1ml	<b>2</b>	£53.61
<b>Haloperidol</b>	Liquid sugar-free	2mg/ml	100ml	<b>1</b>	£6.51
<b>Hyoscine Butylbromide</b>	Solution for Injection Amps	20mg/1ml	10 x 1ml	<b>2</b>	£2.92
<b>Hyoscine hydrobromide</b>	Transdermal patches	1mg/72 hours	2 patches	<b>2</b>	£9.45
<b>Levomepromazine</b>	Injection	25mg/ml	10 x 1ml	<b>3</b>	£20.13
<b>Levomepromazine</b>	Tablets	25mg	84 tablets	<b>5</b>	£20.26
<b>Lorazepam (Genus Pharmaceuticals preferred)</b>	Tablets	1mg	28 tablets	<b>2</b>	£2.31
<b>Metoclopramide</b>	Injection	10mg/2ml	10 x 2ml	<b>2</b>	£2.79
<b>Midazolam</b>	Injection	10mg/2ml	10 x 2ml	<b>4</b>	<b>£5.70</b>
<b>Buccal midazolam pre-filled oral syringes</b>	Pre-filled oral syringes	10mg/2ml	4 x 2ml	<b>1</b>	£91.50
<b>Morphine sulfate</b>	Injection	10mg/ml	10 x 1ml	<b>3</b>	<b>£11.66</b>
<b>Morphine sulfate</b>	Injection	30mg/ml	10 x 1ml	<b>1</b>	£11.49
<b>Morphine Sulphate</b>	Oral Solution	10mg/5ml	300 ml	<b>1</b>	£4.42
<b>Oramorph (Morphine Sulphate) *CONCENTRATED*</b>	Oral Solution	100mg/5ml	120ml	<b>1</b>	£19.50
<b>Oxycodone</b>	Solution for Injection Amps	10mg/ml	5 x 1ml	<b>1</b>	£8.00
<b>Oxycodone</b>	Solution for Injection Amps	20mg/2ml	5 x 2ml	<b>3</b>	£16.00
<b>Oxycodone</b>	Solution for Injection Amps	50mg/ml	5 x 1ml	<b>1</b>	£70.10
<b>Oxycodone</b>	Oral Solution	5mg/5ml	250ml	<b>1</b>	£7.08
<b>Oxycodone *CONCENTRATED*</b>	Oral Solution	10mg/1ml	120ml	<b>1</b>	£46.63
<b>Paracetamol</b>	Suppositories	500mg	Pack of 10	<b>1</b>	<b>£41.27</b>
<b>Paracetamol</b>	Suppositories	1g	Pack of 10	<b>1</b>	£60.00
<b>Sodium Chloride</b>	Solution for Injection	0.9%	10 x 10mls	<b>1</b>	£3.66
<b>Water For Injection</b>	Ampoules for Injection		10 x 10mls	<b>2</b>	£3.67

- 2.2. . The stock list may be subject to changes in line with national guidance
- 2.3. Where requested, the pharmacist will provide advice to the healthcare professional regarding the prescribing or dosage of EoLC medicines that should be administered to the patient.
- 2.4. The pharmacist will provide information and advice relating to the use of EoLC medication to patients and carers.
- 2.5. The pharmacy and the pharmacist will provide an out-of-hours (OOH) service to the patients in Tower Hamlets Borough (NEL CCG) as outlined in **Error! Reference source not found. for EoLC medication ONLY**. OOH is defined as the hours where the pharmacy is not in operation.
- 2.6. If the pharmacy has to close unexpectedly they must inform the Single point of access team [thgpcg.spa@nhs.net](mailto:thgpcg.spa@nhs.net) **0300 033 5000**
- 2.7. The pharmacy will accept patient's medicine returns for destruction from patients, carers or other healthcare professionals as per the NHS Community Pharmacy Contract: Essential Services Disposal of Unwanted Medicines. Please see Appendix 3 –Location of Tower Hamlets Pharmacies providing EoL medications
- 2.8.
- 2.9.
- 2.10.
- 2.11.



## Appendix 4

### 3. Aims and Intended Outcomes

- 3.1. To ensure that there is 24 hours 7 days a week availability of EoLC medicines from community pharmacies in Tower Hamlets. This will include the normal opening hours of the community pharmacy providing the service as well as any OOH call outs required for urgent dispensing of EoLC medications.
- 3.2. To ensure that there is easy access to EoLC medicines to provide patients with good symptom control and ensure that their symptom control is maintained.
- 3.3. Help prevent a crisis and emergency hospital attendance with the possibility of admission arising due to the lack of access to medication.

#### 3.4. NHS Outcomes Framework Domains & Indicators

<b>Domain 1</b>	Preventing people from dying prematurely
<b>Domain 2</b>	Enhancing quality of life for people with long-term conditions
<b>Domain 3</b>	Helping people to recover from episodes of ill-health or following injury
<b>Domain 4</b>	Ensuring people have a positive experience of care
<b>Domain 5</b>	Treating and caring for people in safe environment and protecting them from avoidable harm

### 4. Service Specification and Service Standards

- 4.1. The service will be provided by a practicing pharmacist registered with the General Pharmaceutical Council.
- 4.2. The pharmacy contractor shall maintain the required stock (range and quantity) of EoLC drugs against an agreed list of palliative care drugs (Appendix 1: **Palliative Care and End of Life Care Medication Stock List**)

Medication	Form	Strength	Pack Size	total stock Minimum Quantity Kept	Drug Tariff price March 2022
------------	------	----------	-----------	--------------------------------------	---------------------------------



<b>Alfentanil</b>	Ampoules for Injection	500micrograms/ml	10 x 2ml	<b>3</b>	£6.34
<b>Alfentanil</b>	Ampoules for Injection	5mg/ml	10 x 1ml	<b>3</b>	£23.19
<b>Buprenorphine patches</b>	Transdermal patches	5 micrograms/hour	4 patches	<b>2</b>	£17.60
		10 micrograms/hour	4 patches	<b>2</b>	£31.55
<b>Codeine</b>	Liquid sugar-free	15mg/5ml	200ml	<b>1</b>	£1.76
<b>Cyclizine</b>	Injection	50mg/ml	5 x 1ml	<b>2</b>	£5.78
<b>Dexamethasone Injection</b>	Injection	3.3mg/ml	10 x 1ml	<b>1</b>	<b>£23.99</b>
<b>Diamorphine (OUT OF STOCK)</b>	Powder for Injection	10mg	5 Amps	<b>1</b>	
<b>Diamorphine</b>	Powder for Injection	30mg	5 amps	<b>1</b>	£16.53
<b>Fentanyl patches</b>	Transdermal patches	12micrograms/hour	5 patches	<b>5</b>	£12.59
		25micrograms/hour	5 patches	<b>2</b>	£17.99
		50micrograms/hour	5 patches	<b>5</b>	£33.66
<b>Glycopyrronium</b>	Injection	200micrograms/ml	10 x 1ml	<b>1</b>	£9.68
<b>Glycopyrronium</b>	injection	<b>600micrograms/3ml</b>	10 x 3ml	<b>2</b>	£14.99
<b>Haloperidol</b>	Injection	5mg/ml	10 x 1ml	<b>2</b>	£53.61
<b>Haloperidol</b>	Liquid sugar-free	2mg/ml	100ml	<b>1</b>	£6.51
<b>Hyoscine Butylbromide</b>	Solution for Injection Amps	20mg/1ml	10 x 1ml	<b>2</b>	£2.92
<b>Hyoscine hydrobromide</b>	Transdermal patches	1mg/72 hours	2 patches	<b>2</b>	£9.45
<b>Levomepromazine</b>	Injection	25mg/ml	10 x 1ml	<b>3</b>	£20.13
<b>Levomepromazine</b>	Tablets	25mg	84 tablets	<b>5</b>	£20.26
<b>Lorazepam (Genus Pharmaceuticals preferred)</b>	Tablets	1mg	28 tablets	<b>2</b>	£2.31
<b>Metoclopramide</b>	Injection	10mg/2ml	10 x 2ml	<b>2</b>	£2.79
<b>Midazolam</b>	Injection	10mg/2ml	10 x 2ml	<b>4</b>	<b>£5.70</b>
<b>Buccal midazolam pre-filled oral syringes</b>	Pre-filled oral syringes	10mg/2ml	4 x 2ml	<b>1</b>	£91.50
<b>Morphine sulfate</b>	Injection	10mg/ml	10 x 1ml	<b>3</b>	<b>£11.66</b>
<b>Morphine sulfate</b>	Injection	30mg/ml	10 x 1ml	<b>1</b>	£11.49

<b>Morphine Sulphate</b>	Oral Solution	10mg/5ml	300 ml	<b>1</b>	£4.42
<b>Oramorph (Morphine Sulphate) *CONCENTRATED*</b>	Oral Solution	100mg/5ml	120ml	<b>1</b>	£19.50
<b>Oxycodone</b>	Solution for Injection Amps	10mg/ml	5 x 1ml	<b>1</b>	£8.00
<b>Oxycodone</b>	Solution for Injection Amps	20mg/2ml	5 x 2ml	<b>3</b>	£16.00
<b>Oxycodone</b>	Solution for Injection Amps	50mg/ml	5 x 1ml	<b>1</b>	£70.10
<b>Oxycodone</b>	Oral Solution	5mg/5ml	250ml	<b>1</b>	£7.08
<b>Oxycodone *CONCENTRATED*</b>	Oral Solution	10mg/1ml	120ml	<b>1</b>	£46.63
<b>Paracetamol</b>	Suppositories	500mg	Pack of 10	<b>1</b>	<b>£41.27</b>
<b>Paracetamol</b>	Suppositories	1g	Pack of 10	<b>1</b>	£60.00
<b>Sodium Chloride</b>	Solution for Injection	0.9%	10 x 10mls	<b>1</b>	£3.66
<b>Water For Injection</b>	Ampoules for Injection		10 x 10mls	<b>2</b>	£3.67

- 4.3. ) which will be reviewed when necessary.
- 4.4. There must be named individual(s) who ensures that the stock is managed appropriately.
- 4.5. The pharmacy contractor shall dispense the items from the palliative care stock in response to NHS prescriptions received via EPS (electronic service prescription) for out of ours or if presented to the pharmacy within contracted opening hours in line with the dispensing service of the NHS Community Pharmacy Contractual Framework.
- 4.6. The list in Appendix 1: **Palliative Care and End of Life Care Medication Stock List**

Medication	Form	Strength	Pack Size	total stock Minimum Quantity Kept	Drug Tariff price March 2022
<b>Alfentanil</b>	Ampoules for Injection	500micrograms/ml	10 x 2ml	<b>3</b>	£6.34
<b>Alfentanil</b>	Ampoules for Injection	5mg/ml	10 x 1ml	<b>3</b>	£23.19
<b>Buprenorphine patches</b>	Transdermal patches	5 micrograms/hour	4 patches	<b>2</b>	£17.60
		10 micrograms/hour	4 patches	<b>2</b>	£31.55
<b>Codeine</b>	Liquid sugar-free	15mg/5ml	200ml	<b>1</b>	£1.76
<b>Cyclizine</b>	Injection	50mg/ml	5 x 1ml	<b>2</b>	£5.78
<b>Dexamethasone Injection</b>	Injection	3.3mg/ml	10 x 1ml	<b>1</b>	<b>£23.99</b>
<b>Diamorphine (OUT OF STOCK)</b>	Powder for Injection	10mg	5 Amps	<b>1</b>	
<b>Diamorphine</b>	Powder for Injection	30mg	5 amps	<b>1</b>	£16.53
<b>Fentanyl patches</b>	Transdermal patches	12micrograms/hour	5 patches	<b>5</b>	£12.59
		25micrograms/hour	5 patches	<b>2</b>	£17.99
		50micrograms/hour	5 patches	<b>5</b>	£33.66
<b>Glycopyrronium</b>	Injection	200micrograms/ml	10 x 1ml	<b>1</b>	£9.68
<b>Glycopyrronium</b>	injection	<b>600micrograms/3ml</b>	10 x 3ml	<b>2</b>	£14.99
<b>Haloperidol</b>	Injection	5mg/ml	10 x 1ml	<b>2</b>	£53.61
<b>Haloperidol</b>	Liquid sugar-free	2mg/ml	100ml	<b>1</b>	£6.51
<b>Hyoscine Butylbromide</b>	Solution for Injection Amps	20mg/1ml	10 x 1ml	<b>2</b>	£2.92
<b>Hyoscine hydrobromide</b>	Transdermal patches	1mg/72 hours	2 patches	<b>2</b>	£9.45

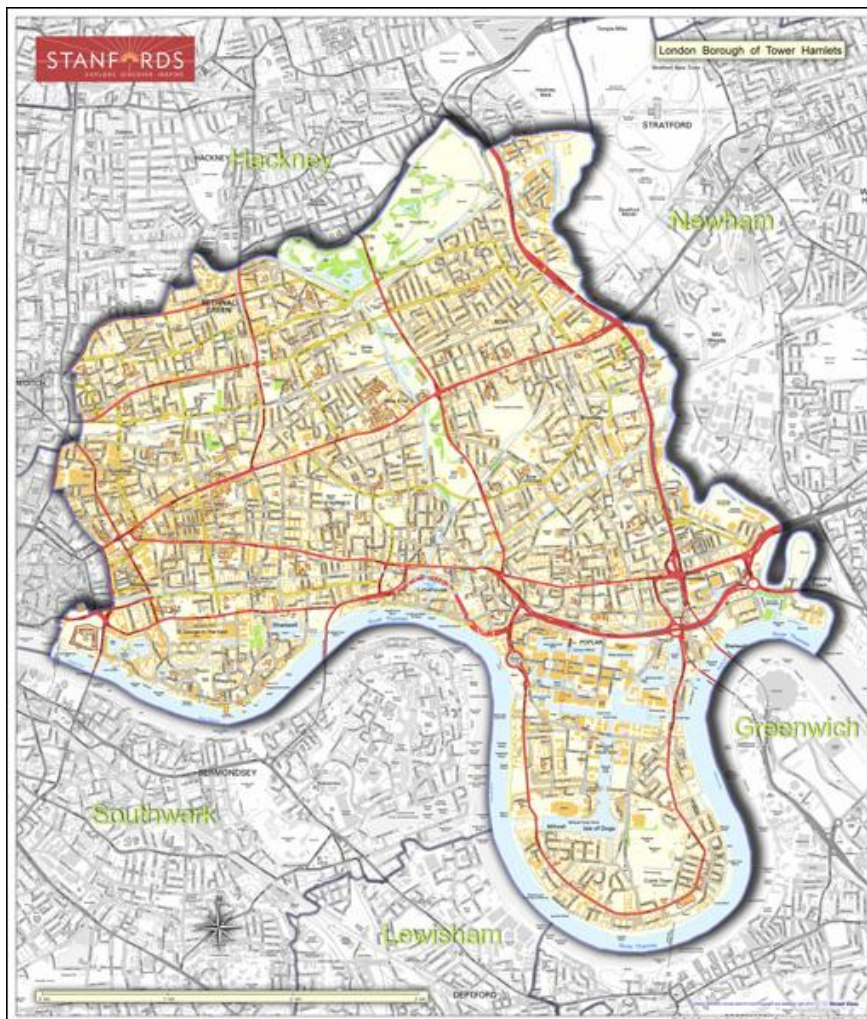
Levomepromazine	Injection	25mg/ml	10 x 1ml	3	£20.13
Levomepromazine	Tablets	25mg	84 tablets	5	£20.26
Lorazepam (Genus Pharmaceuticals preferred)	Tablets	1mg	28 tablets	2	£2.31
Metoclopramide	Injection	10mg/2ml	10 x 2ml	2	£2.79
Midazolam	Injection	10mg/2ml	10 x 2ml	4	£5.70
Buccal midazolam pre-filled oral syringes	Pre-filled oral syringes	10mg/2ml	4 x 2ml	1	£91.50
Morphine sulfate	Injection	10mg/ml	10 x 1ml	3	£11.66
Morphine sulfate	Injection	30mg/ml	10 x 1ml	1	£11.49
Morphine Sulphate	Oral Solution	10mg/5ml	300 ml	1	£4.42
Oramorph (Morphine Sulphate) *CONCENTRATED*	Oral Solution	100mg/5ml	120ml	1	£19.50
Oxycodone	Solution for Injection Amps	10mg/ml	5 x 1ml	1	£8.00
Oxycodone	Solution for Injection Amps	20mg/2ml	5 x 2ml	3	£16.00
Oxycodone	Solution for Injection Amps	50mg/ml	5 x 1ml	1	£70.10
Oxycodone	Oral Solution	5mg/5ml	250ml	1	£7.08
Oxycodone *CONCENTRATED*	Oral Solution	10mg/1ml	120ml	1	£46.63
Paracetamol	Suppositories	500mg	Pack of 10	1	£41.27
Paracetamol	Suppositories	1g	Pack of 10	1	£60.00
Sodium Chloride	Solution for Injection	0.9%	10 x 10mls	1	£3.66
Water For Injection	Ampoules for Injection		10 x 10mls	2	£3.67

- 4.7. identifies minimum stock levels that the pharmacy must stock and maintain. The contractor will identify where supply problems prevent compliance with this requirement and notify Tower Hamlets, Newham, Waltham Forrest (TNW) CCG Medicines Optimisation Team, within **one working day** via:

**E-mail: nelondon.tnwmedicinesoptimisation@nhs.net**

(Please see Appendix 2 for the service pathway). **Error! Reference source not found.**

- 4.8. The identified range and quantity of medicines are **in addition** to any demand requirement arising from the pharmacy's normal within hours dispensing service.
- 4.9. The pharmacy contractor must operate this service for their full opening hours and OOH where required as per the algorithm in Appendix 2.
- 4.10. The pharmacy contractor must maintain appropriate records for the pharmacy and Tower Hamlets Borough (NEL CCG) to cover ordering, receipt, batch number, expiry date checks and audits to meet legal and Tower Hamlets Borough (NEL CCG) requirements and ensure effective, ongoing service delivery.
- 4.11. The pharmacy contractor will have and will update specific standard operating procedures (SOP) to meet all of these service requirements and reflect changes in practice or guidelines where appropriate.
- 4.12. The pharmacy contractor will ensure that pharmacists and staff involved in the provision of the service have received the appropriate training and can deliver the service for the full contracted and voluntarily extended opening hours, as well as have a SOP for when the pharmacist is called OOH (see Section 6).
- 4.13. In circumstances where the pharmacy is unable to supply the item(s) on demand, they will direct/signpost the patient, carer or healthcare professional to the nearest alternate pharmacy provider of EoLC Medication, checking first that they have the required item(s) in stock as per Appendix 2.
- 4.14. In circumstances where the pharmacy is unable to supply the item(s) on demand, they will inform the prescriber of the issue with providing the mediation to the patient or carer as per **Error! Reference source not found.**
- 4.15. The pharmacy contractor shall notify TNW Medicines Optimisation Team of any changes to the contact details of the pharmacy manager and/or lead pharmacist for this service.
- 4.16. The pharmacy contractor will accept controlled drugs and other medication for destruction as per the Good Practice Guidance in Appendix 3 –Location of Tower Hamlets Pharmacies providing EoL medications
- 4.17.
- 4.18.
- 4.19.
- 4.20.



## Appendix 4

- 4.21. The pharmacy core and supplementary (combined) opening times are equivalent to 55 hours per week.
- 4.22. The pharmacy will be open for Monday to Saturday.

**5. Service description for out of hours access (the hours where the pharmacy is not in operation).**

- 5.1. The community pharmacist will be contacted by the Tower Hamlets Single Point of Access (SPA) coordinator (who will have been contacted by the clinician), who will inform them of the EoL prescription sent to their pharmacy via EPS (electronic prescription service). The pharmacist will inform the SPA coordinator the time the EoL prescription medication can be collected by the patient representative. For EoL prescription requests in hours your normal delivery arrangements should apply.
- 5.2. It is the responsibility of the SPA coordinator to then contact & update the requesting clinician, who will need to inform the patient's representative from which pharmacy the EoL medication can be collected and the time of the collection.
- 5.3. If the pharmacist receives a call from the SPA and is unable to attend the pharmacy, then the SPA coordinator will need to contact the next pharmacy provider nearest to the patient's address to then advise the clinician.
- 5.4. On contact with the SPA coordinator, once the pharmacist has confirmed that they can provide the EoL medicines from their pharmacy, they will be informed once an EoL medication prescription has been sent to their pharmacy and the pharmacist should also be provided with the following patient details if available:
- Patient name and address
  - Patient/ patient's representative telephone number
  - Date of birth
  - Name of drug prescribed, dose, formulation and quantity required
  - Patient prescription charge exemption (if applicable)
  - Prescribing doctor name and contact details for any queries
- 5.5. The pharmacist must be able to provide the medication within 2-3 hours to an out of hours call. If this is not possible, then the alternative pharmacist should be contacted for the call out.
- 5.6. Please note, the pharmacist will be contacted out of hours via their personal mobile number. This is not shared widely. If there is a change in the mobile number, the commissioner must be informed. It is the responsibility of the pharmacist to ensure their mobile phone is available at all times, to respond to a possible call. Where due to unforeseen circumstances, the pharmacist will be unable to deliver on service out of hours, the commissioner must be informed.

- 5.7. During an out-of-hours callout, the Pharmacist can ask the requester who may be the Healthcare professional or patient's representative to accompany the Pharmacist to the Pharmacy site at the same time to ensure safe transfer of medicines/service.

## 6. Training Requirements

- 6.1. Any pharmacist, including locums, who will be involved with the service must complete CPPE Fundamental of Palliative Care and the CPPE e-Assessment Palliative Care 2022 <https://www.cppe.ac.uk/programmes/l/palliative-ec-01/>
- 6.2. Pharmacists providing the service, including locums, may be asked to provide evidence of completion of the CPPE Palliative Care e-learning: [Click here](#) by the commissioner during contract reviews.

## 7. Quality and Clinical Governance Standards

- 7.1. The pharmacy contractor must comply with all the requirements of the Essential services of the NHS Community Pharmacy Contractual Framework.
- 7.2. The pharmacy contractor must provide Tower Hamlet Borough with a premises specific nhs.net e-mail address which is accessed by the pharmacy at least once a day during opening hours.
- 7.3. The pharmacy contractor shall ensure that pharmacists and staff involved in the provision of the service are appropriately trained, are aware of and operate within local procedures and guidelines.
- 7.4. The pharmacy contractor shall ensure that any paperwork relating to the service, local procedures and guidelines issued by Tower Hamlets Borough (NEL CCG) are easily accessible within the pharmacy. This will include the Barts Health NHS Trust End of Life Injectable Guidelines and list of participating pharmacies.
- 7.5. The pharmacy contractor may be required to undertake clinical audits relating to the service where required by Tower Hamlets Borough (NEL CCG).
- 7.6. The pharmacy contractor will have a system in place to investigate incidents and will report any incidents related to the service to Tower Hamlets Borough (NEL CCG).
- 7.7. The pharmacy contractor will undertake Significant Event Analysis of incidents relating to the service and demonstrate learning from incidents where required by Tower Hamlets Borough (NEL CCG).
- 7.8. The pharmacy contractor must report to Tower Hamlets Borough (NEL CCG) any items that are unable to be dispensed on-demand and inform Tower Hamlets Borough (NEL CCG) how the incident has been resolved.



## **8. Monitoring Requirements**

- 8.1. At the contract review, Tower Hamlets Borough (NEL CCG) may sample / check the availability of the agreed formulary drugs, and contractors may be required to make appropriate documents available for inspection.
- 8.2. At any time Tower Hamlet Borough may request information on any audit the pharmacy has completed.
- 8.3. The pharmacy will demonstrate SOP and monitoring processes as part of any general contract monitoring undertaken by Tower Hamlets Borough (NEL CCG).
- 8.4. If at any time, agreed formulary drugs are not available or are out of date, and there is no evidence of a recent supply (within the previous working day) then the maintenance payment may be withheld.

## **9. Professional Indemnity Insurance**

- 9.1. The pharmacists providing the service shall maintain insurance in respect of public liability and personal indemnity against any claims, whatsoever which may arise out of the terms, conditions and obligations of this agreement.

## **10. End of Life Care Access to Medication Scheme Payment Schedule**

- 10.1. Tower Hamlets Borough (NEL CCG) will reimburse the contractor for initial stock on the submission of an invoice and the Memorandum of Understanding agreement. The agreed price in Appendix 1 will be paid regardless of actual price paid. Prices will be taken from the March 2022 Edition of that financial year Drug Tariff and if not included, the equivalent BNF list price.
- 10.2. The pharmacy contractor will receive, on an annual basis, a fee of £300 to help support the pharmacy with any administration costs and training associated with the service. The fee will be paid as per the process outlined in the memorandum of understanding and submission of an invoice.
- 10.3. The pharmacist contractor will receive £200 per call out to provide an out-of-hours service to dispense urgent end of life medication to Tower Hamlets patients.
- 10.4. Drugs dispensed on FP10 will be reimbursed through usual PPD methods and as such, this will fund replacement of stock including expired stock. It is envisaged by Tower Hamlets Borough (NEL CCG) that controlled drugs identified within Appendix 1 of this document, will not significantly increase the overall pharmacy controlled drug storage requirements for the majority of contractors.
- 10.5. Please use the invoice template in Appendix 6 for claims and reimbursements.



- 10.6. Any claims for reimbursement of expired drugs on invoices should be supported with evidence – please refer to Appendix 5.
- 10.7. Tower Hamlets Borough (NEL CCG) will reimburse the contractor for initial stock on the submission of an invoice and the Memorandum of Understanding agreement. The prices in appendix 1 are based on cost of drugs from Drug Tariff April 2022 and if not included, equivalent BNF list price. The cost of the drug list will be reimbursed in full, based on the price of purchase made at that time. Any medicines that have expired during the service and requires replacement for the EOL service will be reimbursed. A copy of the invoice should be submitted when making the claim for reimbursement
- 10.8. The CCG is responsible for maintaining a list of pharmacies and informing the OOH providers, GPs and the community teams of these pharmacists.

## **11. Declaration**

- 11.1. The Service Specification and Memorandum of Understanding with Tower Hamlets Borough (NEL CCG) must be signed for each individual pharmacy wishing to supply EoLC drugs through this scheme. It is the contractor's responsibility to ensure that every pharmacy that supplies EoLC understands the terms of this agreement.

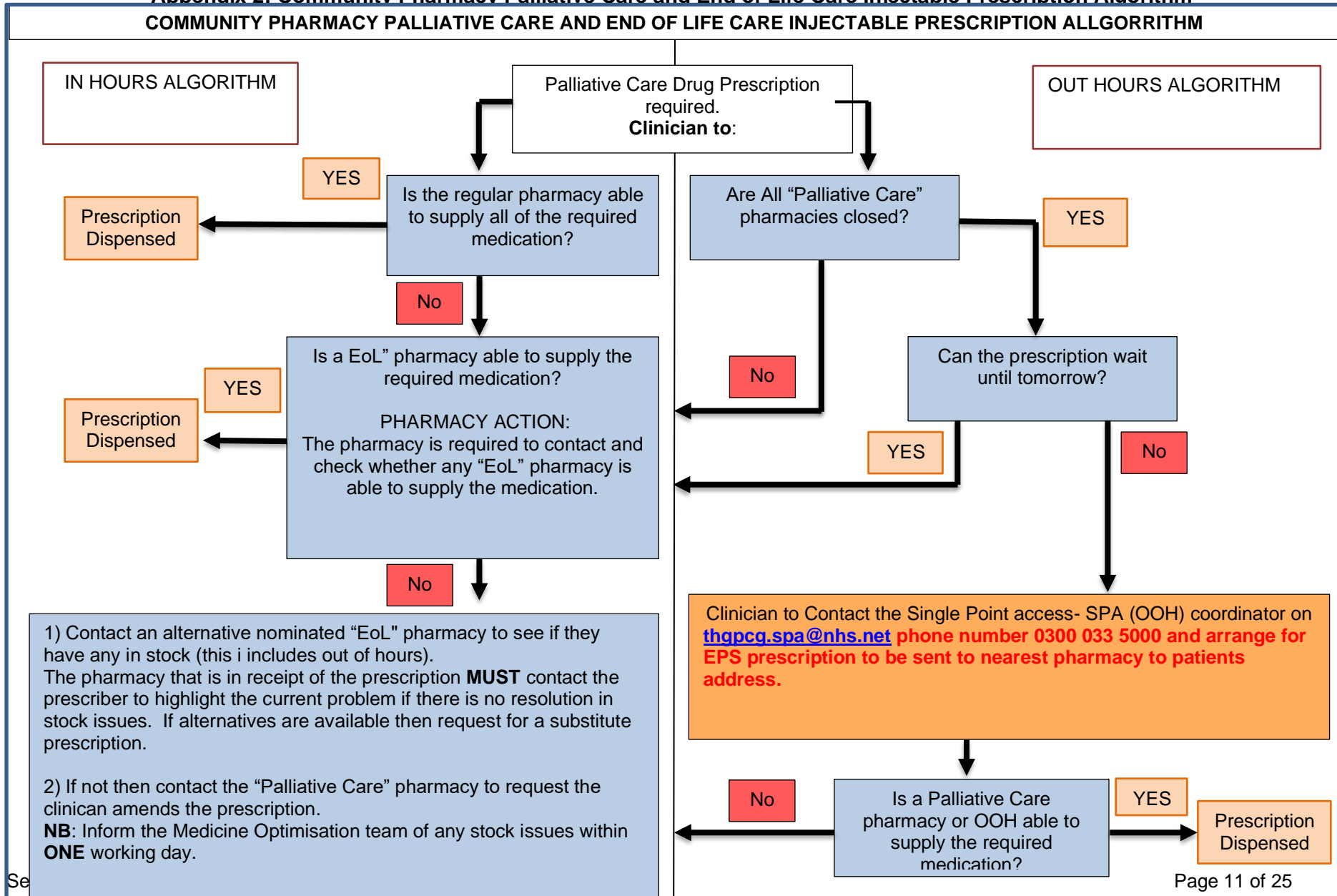
**Appendix 1: Palliative Care and End of Life Care Medication Stock List**

Medication	Form	Strength	Pack Size	total stock Minimum Quantity Kept	Drug Tariff price March 2022
<b>Alfentanil</b>	Ampoules for Injection	500micrograms/ml	10 x 2ml	<b>3</b>	£6.34
<b>Alfentanil</b>	Ampoules for Injection	5mg/ml	10 x 1ml	<b>3</b>	£23.19
<b>Buprenorphine patches</b>	Transdermal patches	5 micrograms/hour	4 patches	<b>2</b>	£17.60
		10 micrograms/hour	4 patches	<b>2</b>	£31.55
<b>Codeine</b>	Liquid sugar-free	15mg/5ml	200ml	<b>1</b>	£1.76
<b>Cyclizine</b>	Injection	50mg/ml	5 x 1ml	<b>2</b>	£5.78
<b>Dexamethasone Injection</b>	Injection	3.3mg/ml	10 x 1ml	<b>1</b>	<b>£23.99</b>
<b>Diamorphine (OUT OF STOCK)</b>	Powder for Injection	10mg	5 Amps	<b>1</b>	
<b>Diamorphine</b>	Powder for Injection	30mg	5 amps	<b>1</b>	£16.53
<b>Fentanyl patches</b>	Transdermal patches	12micrograms/hour	5 patches	<b>5</b>	£12.59
		25micrograms/hour	5 patches	<b>2</b>	£17.99
		50micrograms/hour	5 patches	<b>5</b>	£33.66
<b>Glycopyrronium</b>	Injection	200micrograms/ml	10 x 1ml	<b>1</b>	£9.68
<b>Glycopyrronium</b>	injection	<b>600micrograms/3ml</b>	10 x 3ml	<b>2</b>	£14.99
<b>Haloperidol</b>	Injection	5mg/ml	10 x 1ml	<b>2</b>	£53.61
<b>Haloperidol</b>	Liquid sugar-free	2mg/ml	100ml	<b>1</b>	£6.51
<b>Hyoscine Butylbromide</b>	Solution for Injection Amps	20mg/1ml	10 x 1ml	<b>2</b>	£2.92
<b>Hyoscine hydrobromide</b>	Transdermal patches	1mg/72 hours	2 patches	<b>2</b>	£9.45
<b>Levomepromazine</b>	Injection	25mg/ml	10 x 1ml	<b>3</b>	£20.13
<b>Levomepromazine</b>	Tablets	25mg	84 tablets	<b>5</b>	£20.26
<b>Lorazepam (Genus Pharmaceuticals preferred)</b>	Tablets	1mg	28 tablets	<b>2</b>	£2.31
<b>Metoclopramide</b>	Injection	10mg/2ml	10 x 2ml	<b>2</b>	£2.79
<b>Midazolam</b>	Injection	10mg/2ml	10 x 2ml	<b>4</b>	<b>£5.70</b>
<b>Buccal midazolam pre-filled oral syringes</b>	Pre-filled oral syringes	10mg/2ml	4 x 2ml	<b>1</b>	£91.50

<b>Morphine sulfate</b>	Injection	10mg/ml	10 x 1ml	<b>3</b>	<b>£11.66</b>
<b>Morphine sulfate</b>	Injection	30mg/ml	10 x 1ml	<b>1</b>	£11.49
<b>Morphine Sulphate</b>	Oral Solution	10mg/5ml	300 ml	<b>1</b>	£4.42
<b>Oramorph (Morphine Sulphate) *CONCENTRATED*</b>	Oral Solution	100mg/5ml	120ml	<b>1</b>	£19.50
<b>Oxycodone</b>	Solution for Injection Amps	10mg/ml	5 x 1ml	<b>1</b>	£8.00
<b>Oxycodone</b>	Solution for Injection Amps	20mg/2ml	5 x 2ml	<b>3</b>	£16.00
<b>Oxycodone</b>	Solution for Injection Amps	50mg/ml	5 x 1ml	<b>1</b>	£70.10
<b>Oxycodone</b>	Oral Solution	5mg/5ml	250ml	<b>1</b>	£7.08
<b>Oxycodone *CONCENTRATED*</b>	Oral Solution	10mg/1ml	120ml	<b>1</b>	£46.63
<b>Paracetamol</b>	Suppositories	500mg	Pack of 10	<b>1</b>	<b>£41.27</b>
<b>Paracetamol</b>	Suppositories	1g	Pack of 10	<b>1</b>	£60.00
<b>Sodium Chloride</b>	Solution for Injection	0.9%	10 x 10mls	<b>1</b>	£3.66
<b>Water For Injection</b>	Ampoules for Injection		10 x 10mls	<b>2</b>	£3.67

## Appendix 2: Community Pharmacy Palliative Care and End of Life Care Injectable Prescription Algorithm

### COMMUNITY PHARMACY PALLIATIVE CARE AND END OF LIFE CARE INJECTABLE PRESCRIPTION ALLGORRITHM



### Appendix 3 –Location of Tower Hamlets Pharmacies providing EoL medications

**Forward Pharmacy**  
648 Mile End Road,  
E3 4LH, Tower Hamlets,

Mon- Fri: 9am -1900  
Sat: 9am- 1800  
Sun: 10am- 1800  
In hours: 0208-980 1231

**Out of hours Tel: 07912 628940**

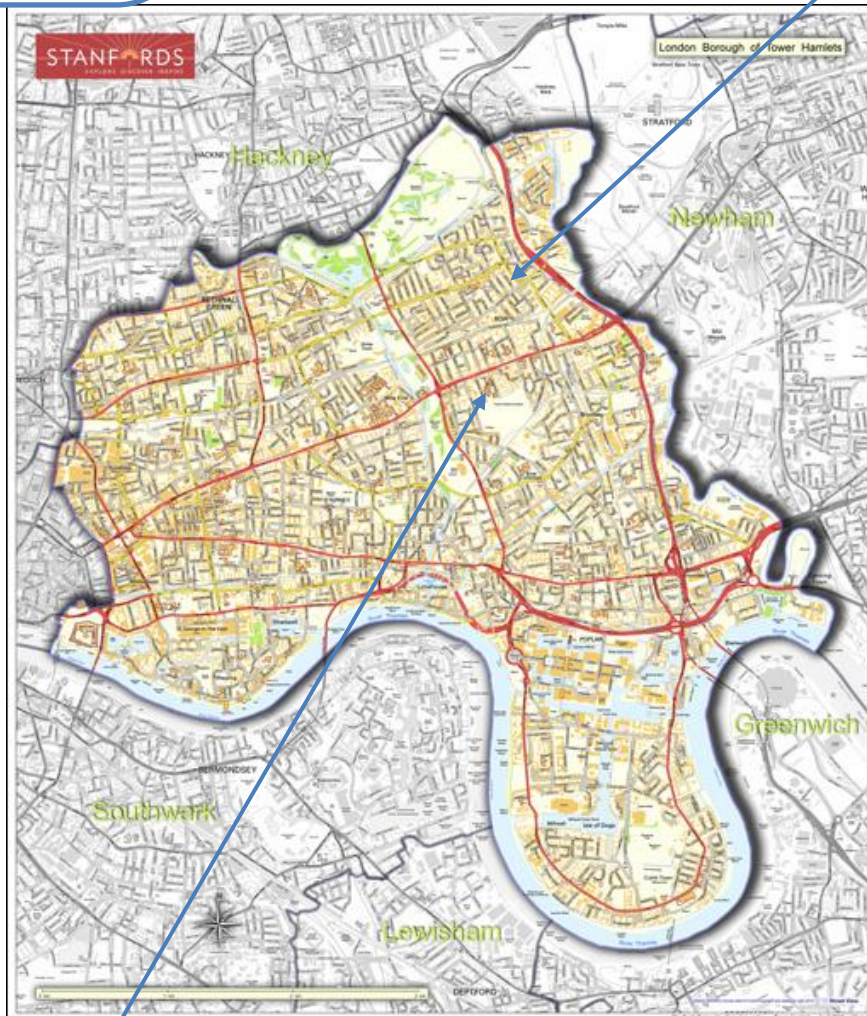
**DO NOT GIVE THE MOBILE TEL NO  
TO ANYONE OUTSIDE OF THE SPA**

**Bell Pharmacy**  
534 Roman Road  
E3 5ES

Opening Hours:  
Monday – Sat 7am – 2300  
Sun: 10am-1400  
In hours tel:020 8980 8853

**Out of hours tel: 07932 494 342**

**(DO NOT GIVE THE MOBILE TEL NO TO ANYONE  
OUTSIDE OF THE SPA TEAM)**



**Chrischem**  
578 Mile End Road  
E3 4PH  
Opening Hours:  
Monday - Friday 9am - 6pm,  
Saturday 9am -5pm

**In hours tel:020 8980 6470**

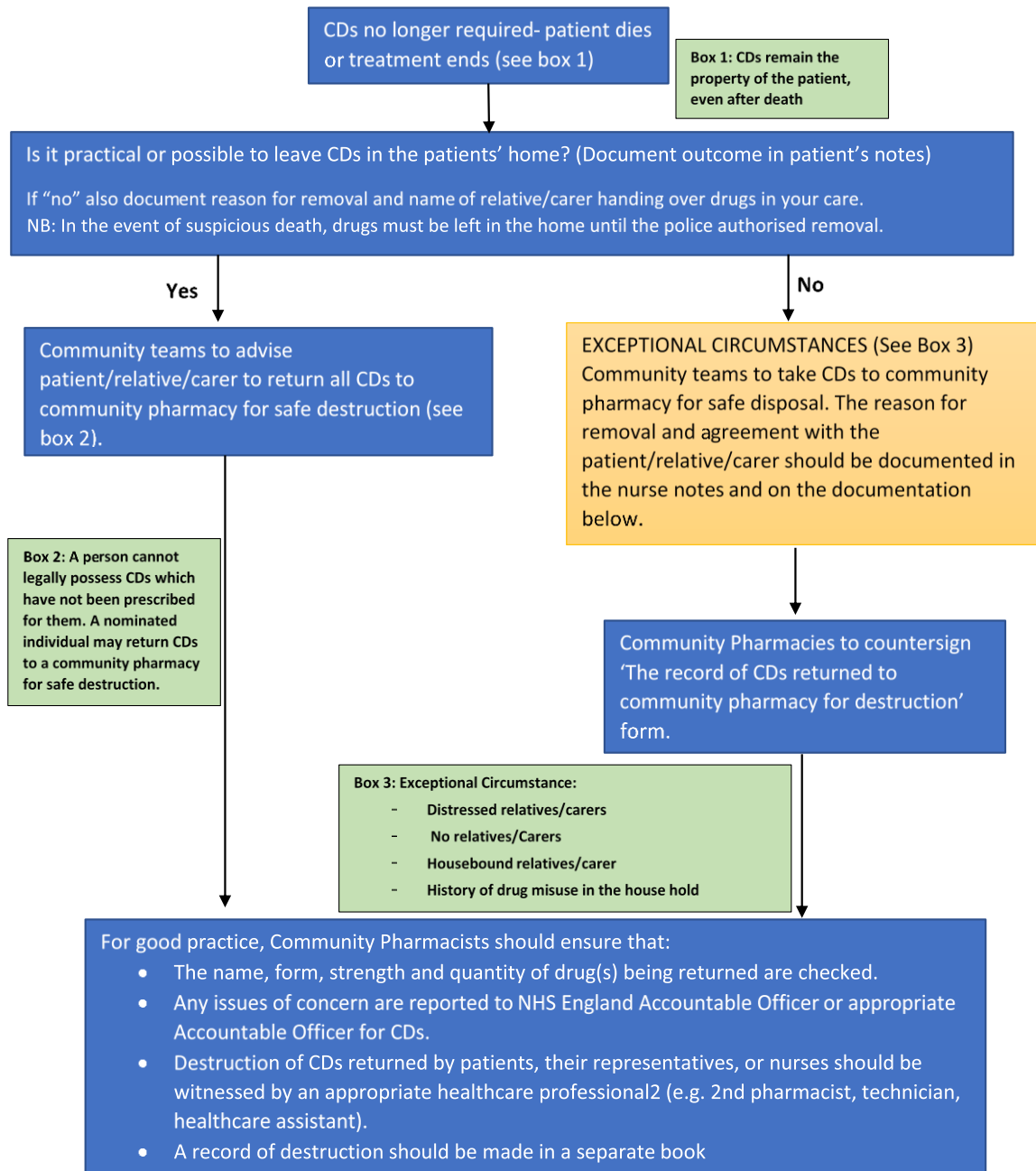
**Out of hours tel: 07969 130306**

**(DO NOT GIVE THE MOBILE TEL NO  
TO ANYONE OUTSIDE OF THE SPA  
TEAM)**

**Guidance- CD disposal/destruction for community**

teams

## Good Practice Guidance regarding CD disposal/destruction for community teams



### Additional Information

For more information on the disposal and destruction of controlled drugs, please visit:  
<https://www.nice.org.uk/guidance/NG46/chapter/Recommendations#handling-controlled-drug>

If you are unknown to the community pharmacy, s/he may ask for a form of Identification including NHS ID Badge.

Adapted from the Guy's and St. Thomas' NHS Foundation Trust Community Health Service Flyer *Controlled Drugs (CDs): Guidance regarding CD disposal/ destruction for community nurses and community pharmacists*. August 2011

## Appendix 5-supporting document

### Record of expired drugs for the end of life community pharmacy service

Name of community pharmacy xxx

Invoice number xxx

Drug	Strength	quantity	Total Amount of claim( £)	Date of purchase	Date expired

### Declaration

I hereby declare the above medications for the provision of the end of life community pharmacy service have expired, and where they are controlled drugs have been documented and disposed of, compliant with the current controlled drugs regulations. No prescriptions for the above-expired drugs were received.

Name of pharmacist

Signature

Date



