

Service Specification

Service specification Number	Sexual health service in community pharmacies
Commissioner Lead	London Borough of Tower Hamlets Public Health
Provider Lead	Community Pharmacists in Tower Hamlets
Period	1 st April 2021 to 31 st March 2023
Date of review	September 2022

1. Introduction

1.1 Context

Good sexual health is a key public health issue, where local council's and Department of Health's ambition is to improve the sexual health and wellbeing of the whole population. Sexual health covers the provision of advice and services around contraception, relationships, sexually transmitted infections (STIs) and abortion. The provision of sexual health services is complex and there is a wide range of providers, including general practice, community services, acute hospitals, community pharmacies and the voluntary, charitable and independent sector. Good sexual health is important to individuals and society and all involved in sexual health will need to work collaboratively to ensure that they deliver accessible and high quality interventions.

1.2 Local context

The London Borough of Tower Hamlets commissions a broad range of providers to deliver contraception, sexual health treatment, HIV prevention and sexual health promotion. Termination services and HIV treatment are commissioned by the CCG and NHS England.

3. Scope of the service required

3.1 Aims and objectives of service

The aim of the service is to:

- To improve access to Emergency Hormonal Contraception (EHC), contraception and sexual health advice;
- To increase screening rates for STIs including HIV, Chlamydia and Gonorrhoea
- To increase access to treatment of Chlamydia and other STIs, via referral to the specialist sexual health services;
- To increase the uptake of the Come Correct C Card condom distribution scheme and increase condom use.

The objectives of the service are:

- To increase access to EHC for all female Tower Hamlets residents of child-bearing age, 13 years and over
- To increase the numbers of young women accessing regular sexual health and family planning services by pharmacist's signposting the availability of sexual health services in primary care and specialist sexual health services
- To increase use of condoms, by providing 3 condoms with each supply of EHC
- To increase access to the National Chlamydia Screening Programme (NCSP) by providing additional locations where people in particular young people aged under 25 years can access testing for Chlamydia and Gonorrhoea and treatment for Chlamydia
- To increase access to STI testing including Chlamydia and Gonorrhoea screening for all sexually active individuals and including HIV testing & other blood born viruses when it is available
- To promote access to the London E Service which includes on-line STI self-sampling kits www.shl.uk
- To increase access to treatment of asymptomatic individuals with Chlamydia infection
- To increase access to sexual health advice and referral on to specialist services where required
- To increase client's knowledge of the connection between unprotected sex and STIs, and thereby to decrease the incidence of STIs among local residents
- To strengthen the network of contraceptive and sexual health services to help provide easy and swift access to advice
- To increase uptake of the Come Correct condom distribution scheme
- To increase partnership working and improve communication between pharmacists and other healthcare professionals;
- To allow a faster response to clients' needs
- To provide services that meets the You're Welcome criteria for young people friendly services
- Increased confidence and skill levels of community pharmacy staff with regards to sexual health
- To provide information including leaflets, signposting and referral to other sexual health services in Tower Hamlets.

3.2 Service description /care pathway

Emergency Hormonal Contraception

- Pharmacists will supply Levonorgestrel EHC when appropriate to clients in line with the requirements of a locally agreed Patient Group Direction (PGD) to females of childbearing age, 13 years and over

- For children aged 13 years to 16 years Pharmacies will assess client if is Fraser competent and if competent supply EHC- however all clients aged 13 to 16 years old will be referred to either Compass Tower Hamlets Integrated Young People's Health and Wellbeing Service or Barts sexual health service for STI testing and further assessment.
- For children aged 13-16 yrs old who are assessed as not being Fraser competent or at risk of child sexual exploitation an immediate documented referral to children social services will be made
- Pharmacies will offer a user-friendly, non-judgmental, client-centred and confidential service
- The supply to eligible patients will be made free of charge to the client at LBTH expense
- Clients excluded from the PGD criteria will be referred to All East; the Integrated Sexual health Service or Safe East if clients are under 19 (or under 25 years in certain circumstances)
- The pharmacy will provide support and advice to clients accessing the service, including advice on the avoidance of pregnancy and sexually transmitted infections (STIs) through safer sex and condom use, advice on the use of regular contraceptive methods. Pharmacists will link into existing networks for integrated sexual health services so that women who need to see a specialist clinician can be referred on rapidly
- To reduce the risk of repeat EHC an assessment of ongoing contraceptive needs should be made, and pharmacists will actively signpost or refer to services that provide long-term contraceptive methods and diagnosis and management of STIs.
- Those presenting for two or more episodes of EHC should be issued with EHC and then sign posted to services that provide long-term contraceptive methods and the pharmacist will be required to document this. Clients that need an emergency coil will need to be discussed with All East or Safe East in real time. The pharmacist should help the client to contact the services if they required support to do so.
- The Pharmacist will provide 3 condoms with each supply of EHC with a quality indicator that at least 50% of all females accessing EHC have accepted condoms.
- The Pharmacist will recommend STI screening to all females accessing EHC with a quality indicator that at least 30% of all females accessing EHC have accepted an STI screening kit
- The Pharmacist will ensure that service information on the full range of sexual health services in East London (including how to access PrEP and PEPSE) is also provided and encourage appropriate access for long term sexual health needs including contraception.

Chlamydia, Gonorrhoea and HIV Screening

- The Chlamydia/Gonorrhoea and HIV screening kits (when HIV kits are made available) should be recommended to all sexually active clients whenever they access any service from the pharmacy, including the EHC service, Come Correct condom distribution scheme, Pharmacy First, purchasing products and ensure that all sexually active under 25 year olds are informed about chlamydia screening.
- If and when HIV kits are made available clients should be encouraged to return these with the Chlamydia & Gonorrhoea screening kit). Where toilet facilities exist, the chlamydia and gonorrhoea self- sample should be completed at the pharmacy.
- The pharmacist will offer a checking service (ensuring that the sample is completed correctly) prior to the client posting the kit and then offer to post the completed kit on the client's behalf
- Follow up of positive result will be carried out by All East- Integrated Sexual Health Service;
- The Chlamydia & Gonorrhoea & HIV screening kits (when HIV kits are available) may be supplied to the intended user for their own use, plus additional kits for their partner(s);
- Clients given a Chlamydia & Gonorrhoea & HIV screening kit should be given instructions as to how to use the kit (see appendix 1 for additional guidance) , including instruction on how to complete the form (see appendix 2 for copy of request form that need to be completed by client) and options for returning completed samples in a sealed bag (provided with the kit) with completed forms to the pharmacy or posting to the lab themselves using the pre-paid biological samples envelope provided

Treatment for Chlamydia

- Clients testing positive for Chlamydia will be referred to a pharmacy providing this as part of the enhanced service
- Chlamydia treatment (see appendix 3 for patient pathway) to be available for all sexually active young people from the age of 16 and over who have been notified by the All East Integrated Sexual Health Services that they have tested positive for Chlamydia and have been referred to the pharmacy for treatment
- Partner notification will be followed up/carried out directly by Barts Health result management team. Screening kits should be made available by pharmacists for clients to give to their partner(s)
- The pharmacist should supply doxycycline (first line) or azithromycin in line with the current Patient Group Direction that they have been authorised to use;
- If the client is believed to be under 16 years, the pharmacist must check Fraser Competency (previously known as Gillick competence). In this case, the relevant section of the Record Sheet should be completed;

- The pharmacist may make a judgement to provide doxycycline or azithromycin plus condoms to a young person they believe to be under 16 years if:
 - The consequences of not supplying are likely to outweigh the risks of using doxycycline or azithromycin;
 - The client is unable or unlikely to access a GP or Family planning service if supply is refused at the pharmacy.
- All requests for *Chlamydia* treatment must be dealt with sensitively and discreetly. Medicines counter staff must refer all such queries to the pharmacist without delay;
- The pharmacist must personally speak with and counsel the person requesting treatment. Advice may be given over the telephone, but doxycycline or azithromycin can only be supplied, in person, to the intended user;
- Young person will be texted with their results within 7 calendar days of the test kit being posted;
- Each pharmacy will be supplied with a customisable order form to manage consumables. This order form should be emailed to James.Mckechnie@tdlpathology.com Any issues regarding consumable supply should be directed to BHNT.Advice-Sexual-Health-Barts@nhs.net
- All East - Integrated Sexual Health services will manage reconciliation of screening activity carried out by Community Pharmacy

Come Correct Condom Distribution Scheme (C-card)

- The target group are young men and women of 25 years of age and under in Tower Hamlets.
- Pharmacies will act as registration points where young people can receive information about contraception and STIs and be issued with the C Card and condoms (see appendix 5 for copy of registration form to be completed).
- The number of condoms given out is the following:
 - <16 not sexually active – 3 condoms
 - <16 sexually active – 8 condoms to be given out
 - >16 not sexually active - 3 condoms to be given out
 - >16 sexually active - 12 condoms to be given out
- Young people producing a card obtained at another Easy Access Point (EAP) will also be able to access condoms.
- Contact Safe East (Compass UK) for ordering (compass.towerhamletsyphws@nhs.net) / obtaining free of charge Come Correct condom stock.

First Visit from Young Person

- Requests for supply of condoms through the c-card service must be dealt with sensitively and discreetly. Supply of condoms may be managed by appropriately trained members of pharmacy staff.
- Pharmacies will act in a similar way to other already established easy access points (EAPs). A private room or area needs to be provided which can act as the registration point.
- Pharmacist will discuss Contraception and STIs with the young person and do a condom demonstration. If the Young Person is under 16 or may otherwise be vulnerable (for example has learning difficulties), special attention is needed to ensure that abuse or sexual exploitation is not occurring. The pharmacist must check Fraser Competency (previously known as Gillick competence).
- The registration form will be completed online (if they have direct web access) or on paper if not, issue a card, and log how many condoms were given out (See appendix 5). Check correct appendix once all have been added

Subsequent Visits

- If a Young Person is already registered and has a c-card from the pharmacy or another EAP they can go to the pharmacy to pick up their condoms.
- The Young Person will see a sign that you must display in the window (or have the information from publicity) and take their card to the counter.
- The counter staff member will look up the card number on the system and add the number of condoms given out. If the young person has lost their card it will be possible to trace them through the search function.
- The staff member writes the date on the appropriate box on the back of the card. If all boxes have been filled the young person should either be directed back to the EAP where they registered to get a new card, or the patient can be re-registered at the pharmacy.
- Worker asks if there is anything else, they want to talk about (*Chlamydia* testing, emergency contraception etc – move to a private room if necessary).

3.4 Population covered

- EHC scheme available to all females of childbearing age, 13 years and over
- Chlamydia & Gonorrhoea screening and HIV testing (when it is available again) for all sexually active people and all females of childbearing age accessing EHC
- Condom Distribution Scheme targeted at 15-25 years old

- All provision should only be available to Tower Hamlets and non- residents should be signposted to community pharmacies in the borough where people live.

3.5 Any acceptance and exclusion criteria and thresholds

- All clients of the service must live or be usually resident in Tower Hamlets, those who are out of area should be recommended to access the All East open access specialist sexual health services or their local services.
- Out of area young person aged under 16 years old assessed as Fraser competent, and are unable to access EHC from their local service or the open access specialist sexual health service can be supplied EHC - however should be sign posted to e to Safe East - Compass Tower Hamlets Integrated Young People's Health and Wellbeing Service or All East sexual health service.
- Clients presenting for two or more episodes of EHC should be issued with EHC and then referred to services that provide long-term contraceptive methods and the pharmacist will be required to document this. Community pharmacists to sign post clients All East or Safe East. See Appendix 5 for contact details and helping clients to make an appointment if required

3.6 Interdependence with other services/providers

Pharmacist will maintain efficient working relationships with All East - Sexual Health Services and allied services, agencies and stakeholders to enhance the quality of care delivered and ensure the holistic nature of the service.

Referral to specialist services

- External referrals to specialist sexual health and contraceptive services should be undertaken for patients whose needs or symptoms are considered complex and unable to be managed appropriately by pharmacist.
- Patients will be referred to other agencies where appropriate as detailed in the PGD.
- Details of such referrals will be recorded on PharmOutcomes

3.7 Service publicity

The pharmacy will display promotional material describing the range of sexual health services available from the pharmacy. In addition, promotional material for local and national sexual health promotional campaigns e.g. HIV testing week will be displayed by the pharmacy. Leaflets promoting the range of sexual health services in Tower Hamlets will be supplied by Barts Health and will be on display in the pharmacy at all times.

4. Applicable Service Standards

4.1 Applicable national standards

The service is underpinned by and expected to adhere to the following:

- [The Manual for Sexual Health Advisers.](#)
- [Service Standards for Sexual and Reproductive Healthcare \(FSRH 2016\)](#)
- [Service Standards for Sexual and Reproduction for consultation \(FSRH 2020\)](#)
- Progress and Priorities - Working Together for High Quality Sexual Health (MEDFASH 2008)
- Research Governance Framework for Health and Social Care (Department of Health 2008)
- National Standards for the Management of Sexually Transmitted Infections (BASHH & MEDFASH 2019)
- PH3 One to one interventions to reduce the transmission of sexually transmitted infections (STIs) including HIV, and to reduce the rate of under 18 conceptions, especially among vulnerable and at-risk groups (NICE 2007)
- [NICE guidelines on sexual health, contraception, condom schemes, HIV testing](#) 2019
- Clinical Guidance – Emergency Contraception (FSRH 2017 amended 2020)
- [Guidelines on the management of individual STIs can be found on the BASHH website:](#)
- Working together to Safeguard Children – A guide to inter-agency working to Safeguard and promote the welfare of children (HM Government, 2018).
- Tackling teenage pregnancy – Local Government Association, 2013
- [You're Welcome – Quality criteria for young people friendly services, Department of Health 2011](#)
- Safeguarding children and young people: roles and competences for health care staff (Royal College of Paediatrics and Child Health, 2019)
- Fraser Guidelines (1985) & [Information for all Community Pharmacy Staff - issued October 2014](#)

4.2 Applicable local standards

Service requirements

- Must designate a lead for the provision of this service who will ensure that the terms of the contract are fulfilled.
- The identified pharmacists and pharmacies must fulfil the following criteria in order to provide the service:
 - Pharmacist accreditation (as described below);
 - Pharmacist availability throughout the week and at weekends.
- The pharmacist shall ensure the Services are provided from the Pharmacy only.
- Pharmacists are encouraged to provide a private consultation area and a suitable toilet to enable self- sampling to be undertaken on site.
- While participating in the service the pharmacy will designate specific window space for a window sticker, display board or poster giving information on emergency contraception, C Card scheme, Chlamydia screening and service information on sexual health services in Tower Hamlets. The pharmacist will also provide information about sexual health and signpost the patient to other health professionals where necessary.
- The pharmacy will have a suitable area for consultation which ensures privacy when explaining the Service and offering advice to clients in a way that ensures confidentiality with users. It is important that conversations are not overheard.
- The pharmacist and staff must show awareness and be responsive to the needs of young people who access the service and must have either achieved You're Welcome Standards accreditation (young people friendly) or be working to achieve the accreditation.
- The identified pharmacist(s) and pharmacy will make every reasonable effort to ensure that there is no interruption of this service provision. For this reason, any additional pharmacists or regular locum pharmacists should also complete accreditation requirements in order to deliver the service.
- Where interruption of service is unavoidable, the identified pharmacist(s) will ensure that support staff and any replacement pharmacist are aware of the details of the scheme and are able to correctly signpost patients to another participating pharmacy or sexual health provider. This will include ringing ahead if signposting to another pharmacy to ensure that the service is actually available from that pharmacy at that time.

Pharmacist accreditation Requirements

- The pharmacist providing the service is registered with the GPhC, must have completed LSCB validated child safeguarding training, Centre for Pharmacy Postgraduate Education (CPPE) package and any other relevant training provided on the operation of sexual health enhance service (see below section on training).
- Pharmacists must have completed a Disclosure Barring Service (DBS) within the last three years and every three years thereafter. Disclosure information received by London Borough of Tower Hamlets (LBTH) must be considered satisfactory for working with children.
- Each pharmacist offering treatment must have read and signed a copy of PGD for supply of Levonelle and treatment for Chlamydia.
- Pharmacists will provide evidence of appropriate Continuing Professional Development (CPD) based on their training needs assessment, to the LBTH Public Health Team by the end of each financial year.
- The identified pharmacist will successfully complete the training package specific to this project and thus be accredited to provide this service. This should include relevant training to deliver the C-card scheme.
- The identified pharmacist will have to be accredited as above and also practice from a pharmacy, which has been approved by LBTH as suitable to provide the service.
- The identified pharmacist will ensure that they continue to update their skills by attending additional courses when necessary.

Pharmacist availability

- The accredited pharmacist(s) will normally be available within the pharmacy a minimum of four days a week, including a minimum of 3 Saturdays or Sundays per month (unless the pharmacy does not open at weekends).

Patient Assessment

- The identified pharmacist must work within the agreed Patient Group Direction (PGD).
- Service users will be seen as soon as possible. If it is not immediate the service user will be given a time to return or directed to the nearest alternative pharmacy providing this service or nearest alternative provider.
- Pharmacy staff will be trained by the pharmacist to direct all requests for emergency contraception, Chlamydia treatment discreetly to the pharmacist themselves.
- All patients will be offered the opportunity to undertake the consultation in a private area of the pharmacy. Consultations with patients under the age of 16 must take place in a private area where conversations will not be overheard by staff or other patients / customers.

- In accordance with NHS guidance, all patients will be offered a chaperone for the duration of their consultation.
- All patients will be informed that the consultation is confidential, and information will not be passed onto any third party unless with their consent (except in cases requiring disclosure where there is a risk of serious harm to the patient or others).

Training

- The pharmacist(s) must successfully complete any training courses specified by LBTH that will be delivered by All East Barts Health Integrated Sexual Health Service and this will include all PGD training on EHC and Chlamydia treatment. As part of PGD training specific CPPE modules will need to be completed prior to enrolment on PharmOutcomes. These will be specified by All East as part of the PGD training.
- Community Pharmacists can also attend other sexual and reproductive health training provided by All East including BASHH STIF courses or FSRH SRH essential courses
- For recording EHC provision on PharmOutcomes, there is a new enrolment process for EHC and chlamydia treatment provision, which will require all community pharmacists to make a Declaration of competency and this will link to your CPPE profile. It is a requirement that this is completed before a community pharmacist is able supply EHC and chlamydia treatment.
- The pharmacist will then be accredited as an approved practitioner for providing this service
- Pharmacy staff should be aware when to direct clients to community pharmacists for condoms, chlamydia tests, chlamydia treatment and EHC. It is the responsibility of the pharmacist to train pharmacy staff on the operation of these provisions
- The pharmacist should maintain clinical knowledge appropriate to their practice by attending relevant study days, courses and to make themselves aware of appropriate literature;
- Non pharmacist pharmacy staff should attend *Chlamydia* screening training when it is available
- It is a requirement that pharmacists complete online training and assessments as specified by All East Integrated Sexual Health services as part of the training for each PGD
- Sexual and reproductive health related training including safeguarding training can be accessed via the CPPE website <http://www.cppe.ac.uk/learning/programmes.asp?format=&ID=18&theme=21>:

Note: Pharmacists and/or staff who have received appropriate training as part of other CCG or local authority commissioned services can be accredited to provide this service. It is the responsibility of the contractor to ensure that staff are competent and have the necessary skills and knowledge to provide all elements of this service.

Recording

- The pharmacy will comply with using and transmitting information electronically and will maintain software suitable to support the IT system.
- Clinical data entry should be entered on to PharmOutcomes - <https://pharmoutcomes.org/pharmoutcomes>
- Invoice to LBTH should be done within 2 months of the provision being supplied by the community pharmacists. Any provisions beyond this point will not be paid by LBTH.
- For the C-card Scheme complete the online 'Come Correct' database for registration and repeat visits
- The details of all consultations will be entered into the Pharmacy Patient Medication Record (PMR) this records all the medication supplied to patients.
- Completed proformas from consultations will be retained within the pharmacy for 8 years. If the patient is aged under 16, proformas will be retained until the patient's 26th birthday.
- The pharmacist will provide additional data to LBTH for audit purposes on request if required to do so, including providing an audit trail for a maximum of 2 randomly selected patients per year to demonstrate implementation of quality standards, including provision of support appointments, appropriate prescribing etc.
- All community pharmacists will participate in PGD audits carried out by All East

Adverse incidents

- In the event of an adverse incident (significant clinical events, dispensing errors, adverse drug reactions) or near miss, the pharmacist will fill in an incident reporting form and forward a copy to the CSU Pharmacy team and the Tower Hamlets Director of Public Health as soon as possible and no later than 48 hours after incident .

5. Activity levels for the service

5.1 Activity levels for the service

Define activity levels required for the service

See section 6.1

6. Key performance indicators for the service

6.1 Define key performance indicators

- Increased STI screening including Chlamydia screening in all sexually active people including Fraser competent for clients under 16 year of age and all females accessing EHC scheme.
- Increased diagnosis and management of Chlamydia particularly in young people aged under the age of 25
- Increased access to EHC to females of childbearing age, 13 years and over.
- Increased access to sexual health services from community pharmacies
- Increased uptake of the C Card condom distribution scheme among young people under 25 and increase condom use.
- Increased partnership working and improved communication between pharmacists and other healthcare professionals.

6.2 Quality indicators and activity monitoring

Community pharmacists will be required to undertake data collation of activities which should be reported on PharmOutcomes and the commissioner of the service will monitor this on a quarterly basis

- At least 50% of all females accessing EHC have been supplied with condoms
- At least 30% of all females accessing EHC have been supplied with an STI kit
- Where EHC has been supplied twice or more within 6 months there is documented evidence that the women are sign posted to either All East or Safe East services
- Demonstrate that pharmacists and staff involved in the provision of the service have undertaken continuing professional development relevant to this service
- Display promotional material for local and national sexual health promotional campaigns e.g. HIV testing week
- Share regular information and feedback on user satisfaction – commissioner to request

7. Finance for the service

7.1 Breakdown of payments

Emergency Hormonal Contraception

- The fee will be a flat rate fee of £18.50 per consultation plus reimbursement for supply of emergency hormonal contraception where supply is considered appropriate (at drug tariff rate £5.20).
- Where a pack of 3 condoms have been supplied LBTH will pay £1.00

Condom Distribution Scheme (CDS)

Service providers will receive the following fees for the CDS service:

- £5 for new patient registration and entering into database
- £2.50 for re-registration of a patient whose C-card has expired and entering into database
- A fee of £1.00 for supplying condoms and entering into database

STI Screening including Chlamydia screening and treatment

Service providers will receive:

- A fee of £1 for each STI kit supplied (including Chlamydia/Gonorrhoea screening kit)
 - A fee of £5 for each completed kit received at the lab
 - A fee of £7.50 for a positive Chlamydia result
 - A fee of £15 + drug cost for treatment
- Please note that the provider of this contract will recharge all products at the LBTH 's prevailing rate. The commissioner reserves the right to introduce a framework for the supply of drugs in order to ensure best value.

Appendix 1 - Chlamydia and Gonorrhoea screening protocol	9
Appendix 2 - Chlamydia Screening Form for Clients to Complete	12
Appendix 3 - Community Pharmacy Chlamydia/STI and HIV Screening Pathway	13
Appendix 4 - Correct registration form	14
Appendix 5 - Useful resources / contacts	15

Appendix 1 - Chlamydia and Gonorrhoea screening protocol

Who should be offered a postal kit?

- When women who are sexually active attend the pharmacy for emergency contraception, they should be recommended a postal kit.
- When young men or young women are sexually active and attend the pharmacy for condoms under the come Correct condom distribution scheme, they should be recommended a postal kit.
- When young people are sexually active attend the pharmacy to make a purchase or collect a prescription item, they should be offered a postal kit.
- When young people are sexually active ask for a postal kit, they should be provided with one.
- If you have a concern about safeguarding please call the Multi- agency Safeguarding hub 0207 364 5601/5606.

What is included in the postal kit?

- A test for chlamydia and gonorrhoea: [BHS 9 kit \(CT/GC\)](#)
- The test kits are unisex - the same pack used for males and females
- Instruction leaflet - includes pictures to show the user how to take the swabs/urine sample.
- A test request form – **must** be completed by the user with their personal details so that we can contact them with their test results. If young people need help, please assist to complete their forms. This will aid us in sending young people their results, and payments to you for the return of completed test kits.
- A urine sample pot with a transport container to put the urine sample pot in for when the test kit is posted – please ensure patients include their first name and last name and date of birth on the sample label.
- Postage paid, biological sample envelope – to be put post with the samples and completed test request form.

Who will post the postal kit?

The young person can take the postal kit away with them and post the test kit when they have completed it. If they bring the pack back to the pharmacy, just post in the nearest post box within the next few hours.

How will people get their results and how long will it take?

Young people will be texted with their results within 7 calendar days of the test kit being posted.

How do we order more postal kits?

Each pharmacy will be supplied with a bespoke order form to manage consumables. This order form should be emailed to James.Mckechnie@tdlpathology.com Any issues regarding consumable supply should be directed to BHNT.Advice-Sexual-Health-Barts@nhs.net

How will we be paid for activity?

Barts Health Integrated Sexual Health services will manage reconciliation of screening activity carried out by Community Pharmacy

Pharmacies will receive a regular update on screening activity and monies due.

Appendix 2 - Chlamydia Screening Form for Clients to Complete



THE DOCTORS
LABORATORY

Barts Health **NHS**
NHS Trust

CHLAMYDIA AND GONORRHOEA POSTAL PACK – BSH9

Section 1: Read this first

Read the instructions carefully before you start to collect your sample. This pack contains instructions for self-collection of a urine sample. Complete the label on the bottom of the form and affix to the sample containers with your **FULL NAME** and **Date of Birth**. This label needs to match the name and date of birth on the form.

Section 2: Your details

TLC: **CCGX**

Last name: _____ First name: _____

Patient reference: _____ Sex: M F Date of birth:

Postcode: House number: Date of sample collection:

Once the laboratory has received your samples, you can expect to receive your results, by text message

Mobile phone number:

Home telephone number:

Email address: _____

We may contact you in the future with test reminders and other sexual health information.
Please tick this box if you do not wish to be contacted with anything other than your test results.

If your test is reactive we will call you. We will ask if you would like to attend our clinic for further tests.

Section 3: Sexual history

Have you previously tested for STI?

Yes No

Section 4: Ethnic Origin (please tick one box)

White Black Asian Chinese Mixed Other

By filling in this form you are consenting to testing for Chlamydia and Gonorrhoea. We will not share your personal information with anyone outside BARTS Health NHS Trust. By submitting this form, you are consenting to the tests.

For queries please contact us on 020 7377 7650.

URINE POT LABEL

Surname: _____

First name: _____

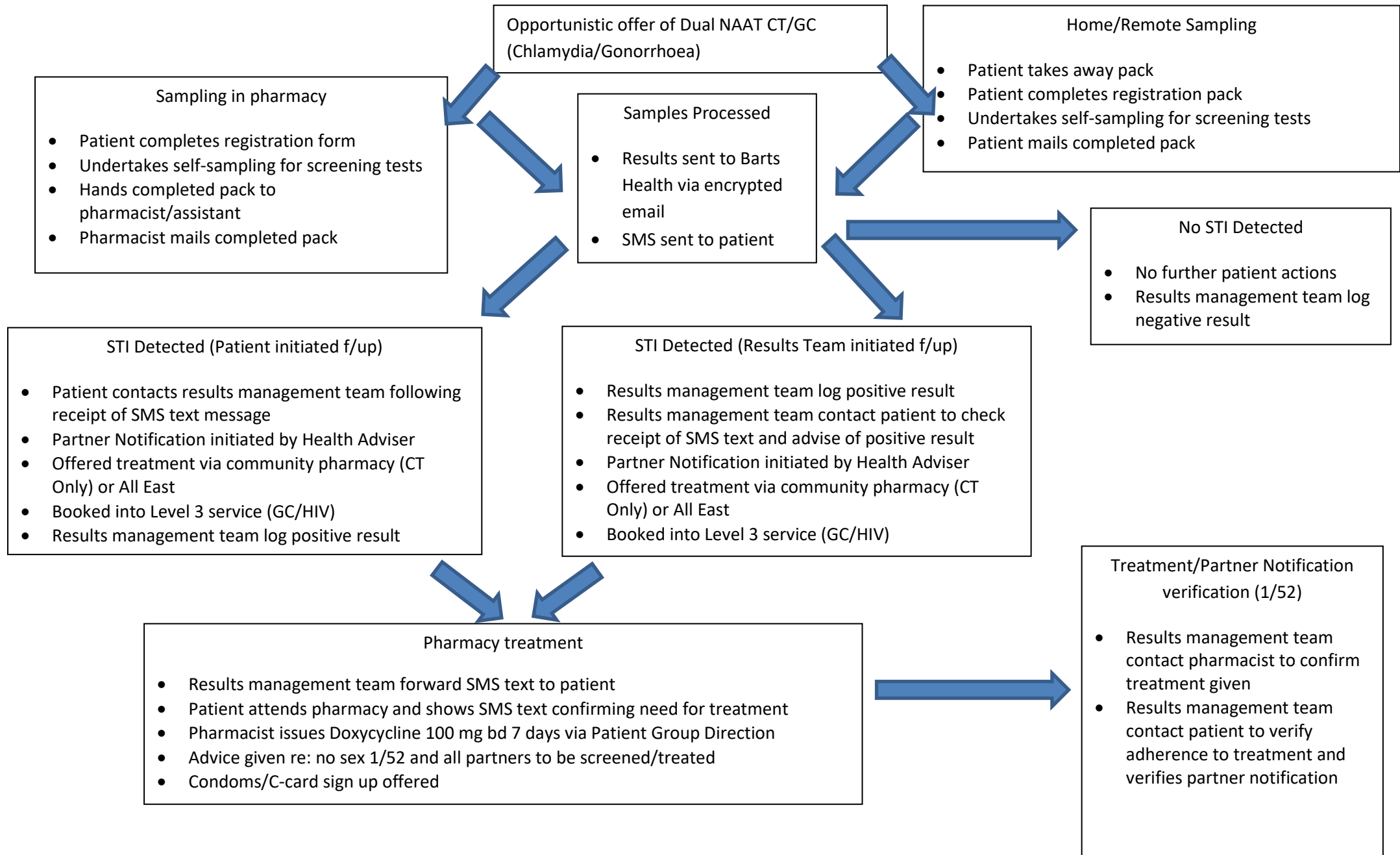
DOB:

FOR LABORATORY USE ONLY

Source code: **BARTS SH**

Site code: _____

Appendix 3 - Community Pharmacy Chlamydia/STI and HIV Screening Pathway



Appendix 4 - Come correct registration form



Come Correct Registration

To be part of the Come Correct and get regular free condoms, please fill out the following information. For more information about Come Correct ask your advisor or go to www.c-card.org.uk all information is kept confidential.

To be completed by advisor		
Date		
Card Number/ London Wide ID		Please insert number on back of card

To be filled out by Young Person			
First initial and surname			
Date of Birth			
Gender	Male		Female
	Transgender		Not Given
	Not Asked		
Postcode (or District)			
Ethnicity			
Religion/Faith (optional)			
	Heterosexual (straight)		Gay
	Lesbian		Homosexual
	Bisexual		Not Given
	Other		Don't want to say
Sexually Active	Yes		
	No		Don't want to say

Encounter Page: To be filled out by the advisor					
Number of condoms given	12	8		3	
Have you completed a condom demonstration?				Yes	No
Items Discussed					
Alcohol Abuse		Contraception			
Local Services		Child Protection/Safeguarding			
Referred to other services		Regular Condom Use			
STIs		Substance Abuse			

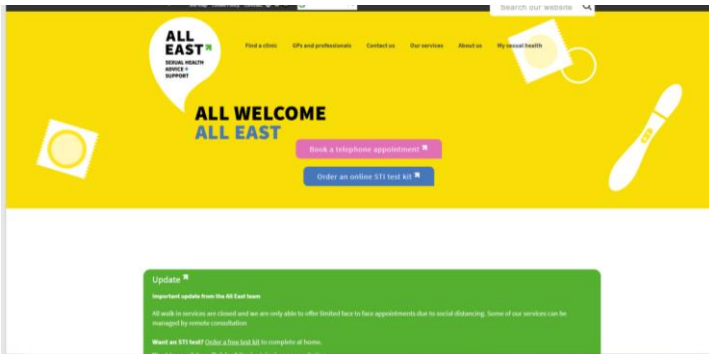
When was their last Chlamydia and Gonorrhoea test?			
If under 16- Is the Young Person Fraser Competent?		Yes	No
Notes			
Registered Outlet/Access Point			
Name of worker			
Signature of worker			

Appendix 5 - Useful resources / contacts

Come correct scheme

<http://www.comecorrect.org.uk/>

All East Specialist Sexual Health service



To support all Tower Hamlets residents with sexual and reproductive concerns **can book a telephone consultation via the All East website: <https://www.alleast.nhs.uk/>**
Call centre number 0207 377 7306/7307 Community pharmacists to sign posting clients to the website and the call centre number and helping clients to make an appointment if required

Safe East – Young People’s service



Safe East -Compass (Tower Hamlets Integrated Young People’s Health and Wellbeing Service for sexual Health and substance misuse support). Services to support young people aged between 10 and 19 and up to 25 if the young person is in care, has special educational needs or a disability around drug and alcohol use and/or sexual health.

towerhamletspwhb@compass-uk.org

Phone: 0203 917 5443

Safeguarding issues

For concerns around safeguard please contact the multi-agency safeguarding hub– on 0207 364 5601/5606

Mash@towerhamlets.gcsx.gov.uk